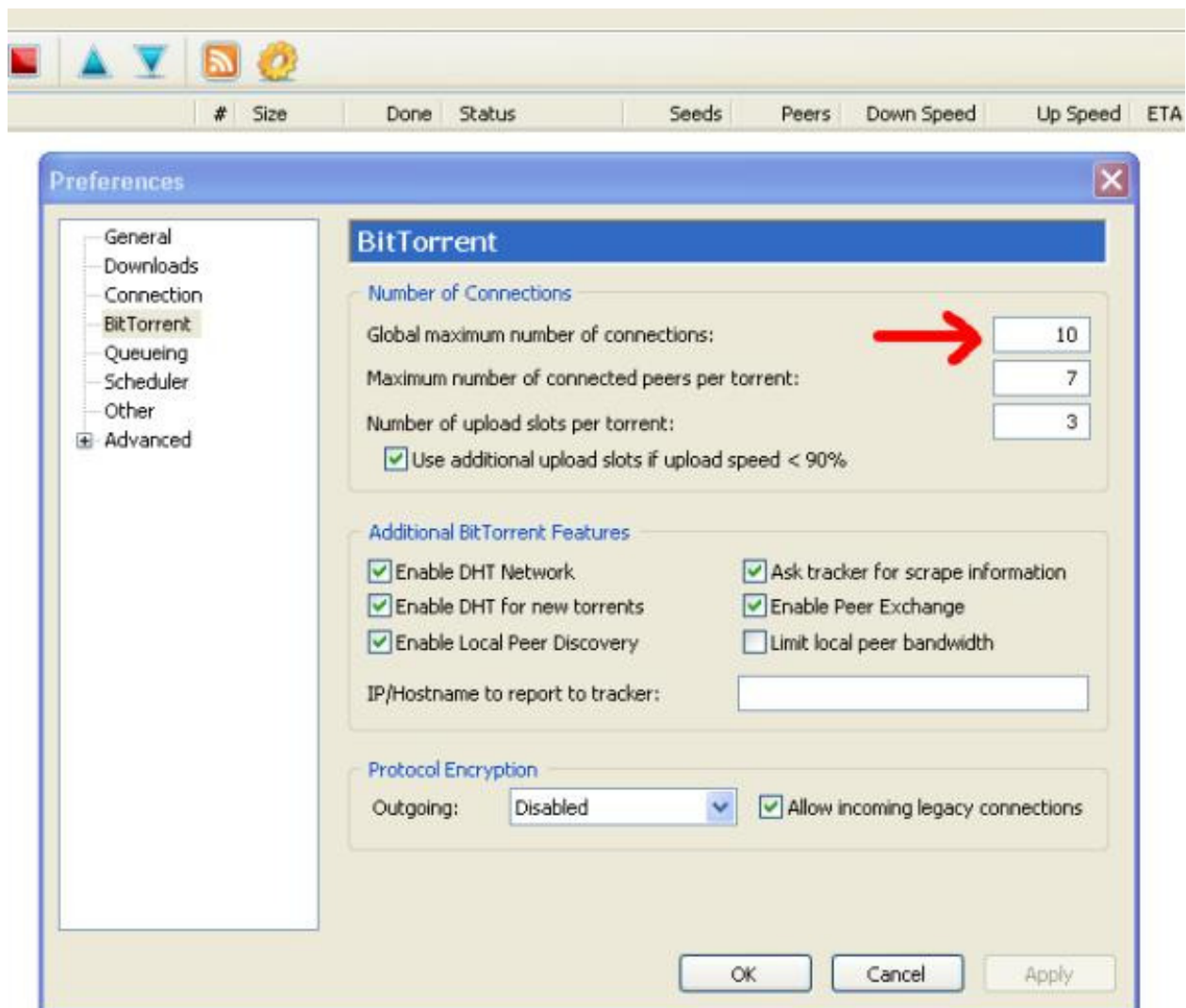


## How to Configure Your P2P Software

### µTorrent

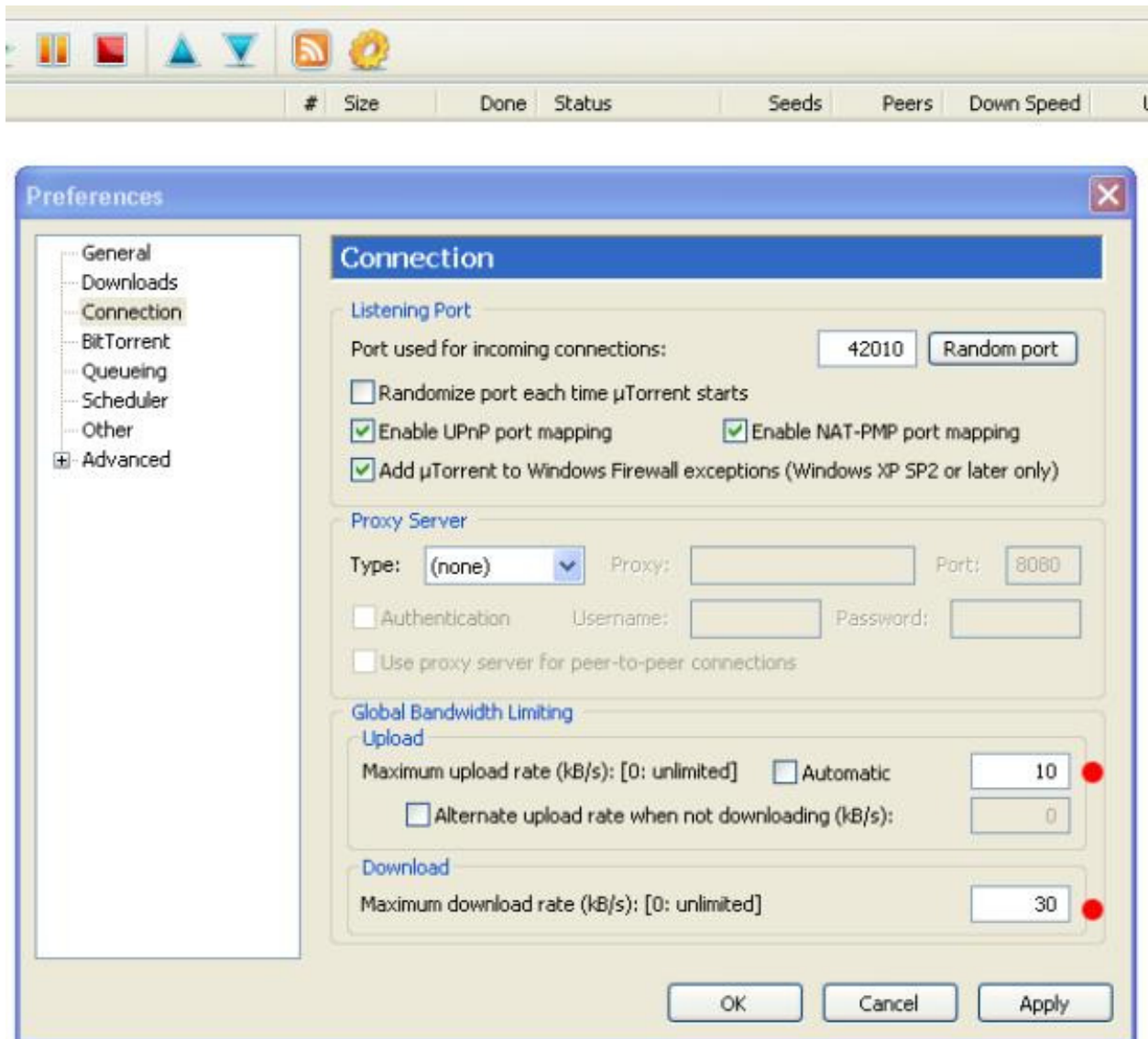
If you're using the µTorrent client, go to 'Options', then 'Preferences'...

Under BitTorrent, set 'Maximum # of Connections' to 10.

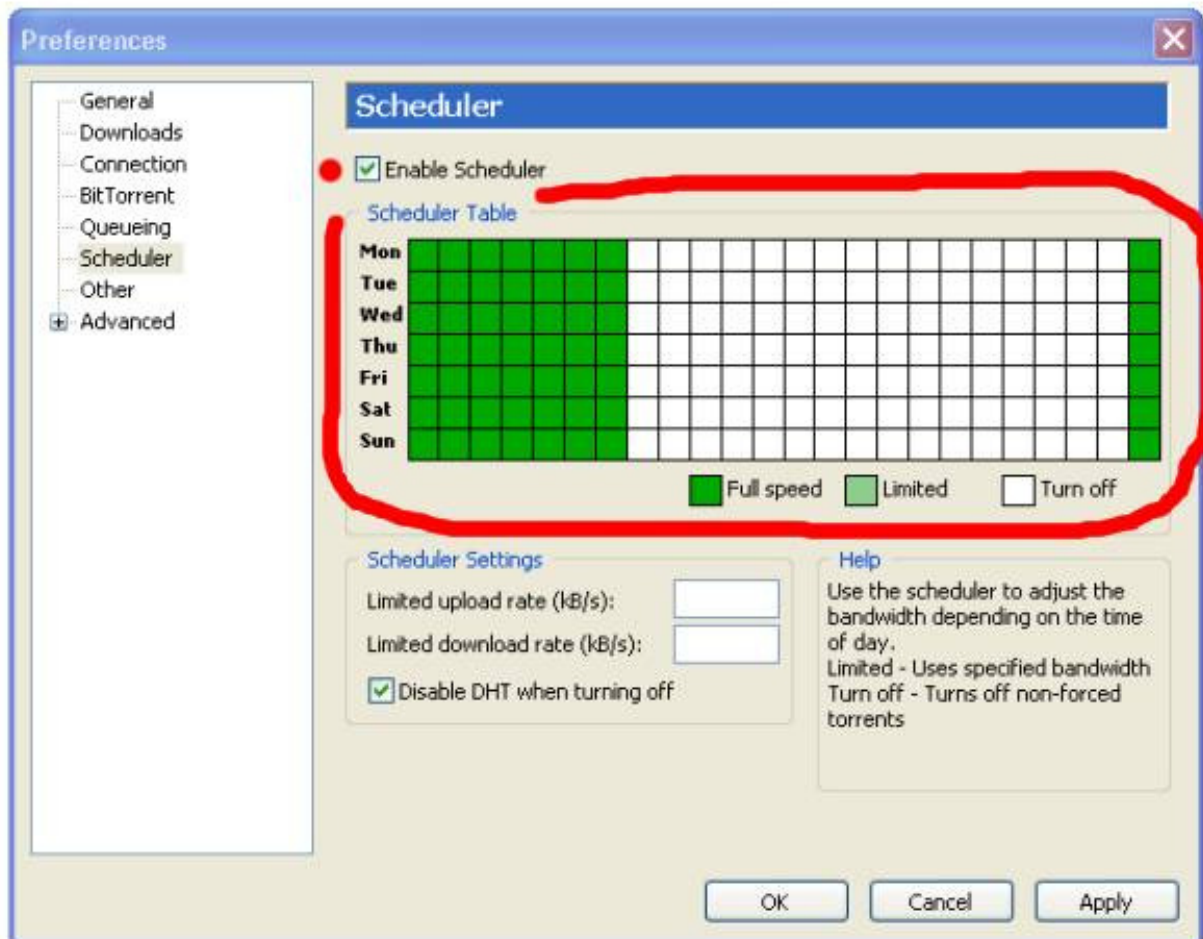
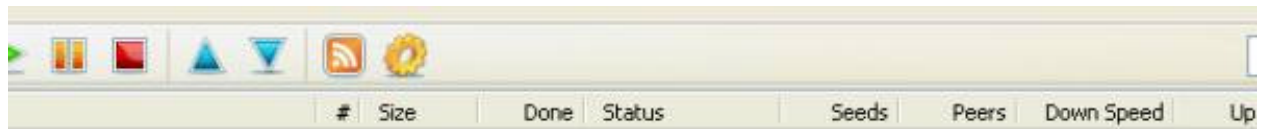


Next, under Connection, set the maximum upload speed to 10kB/s

and maximum download speed to 30kB/s.



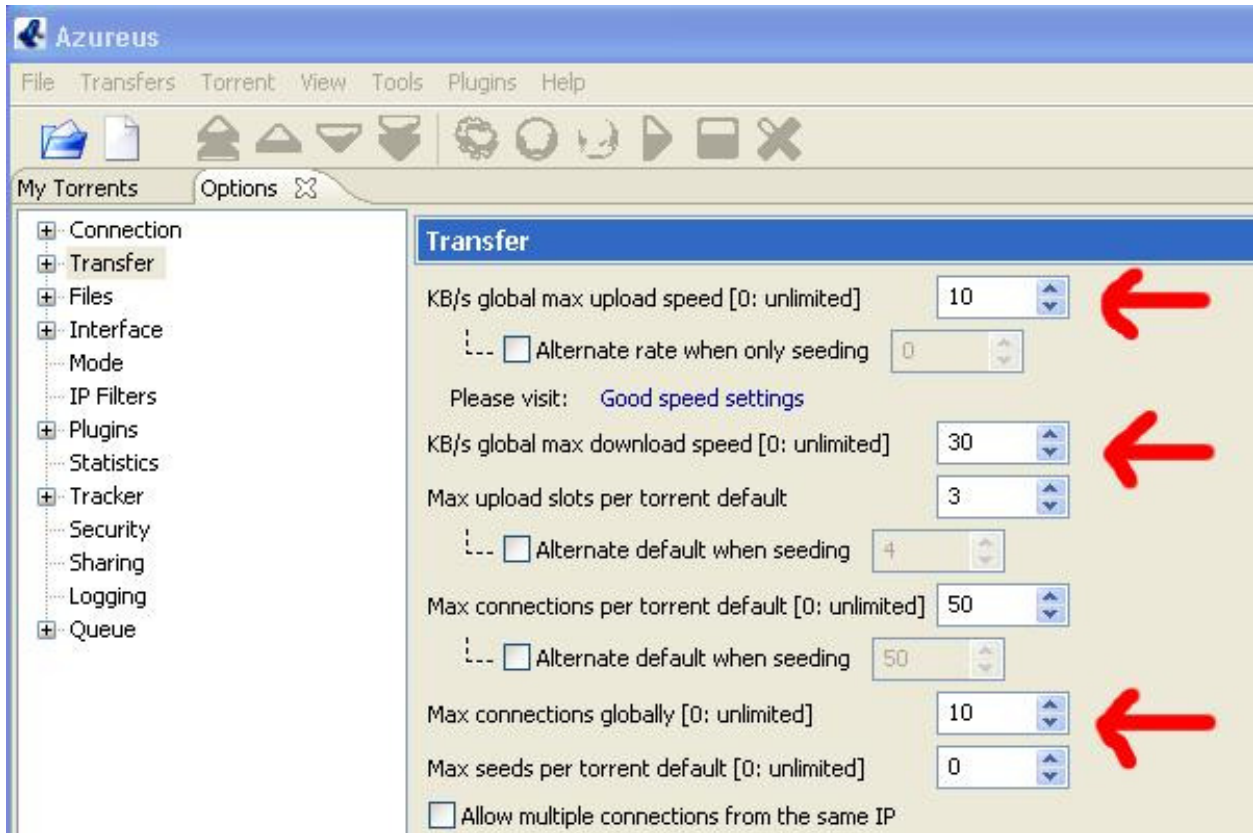
And finally, under Scheduler, select 'Enable' and set 'Turn off' to everyday from 7am until 11pm.



## Azureus

If you're using the Azureus client, go to 'Tools' and then 'Options'...

Under 'Transfer', set 'global upload' to 10kB/s, 'global download' to 30kB/s and then 'Max connections globally' to 10 as shown below.

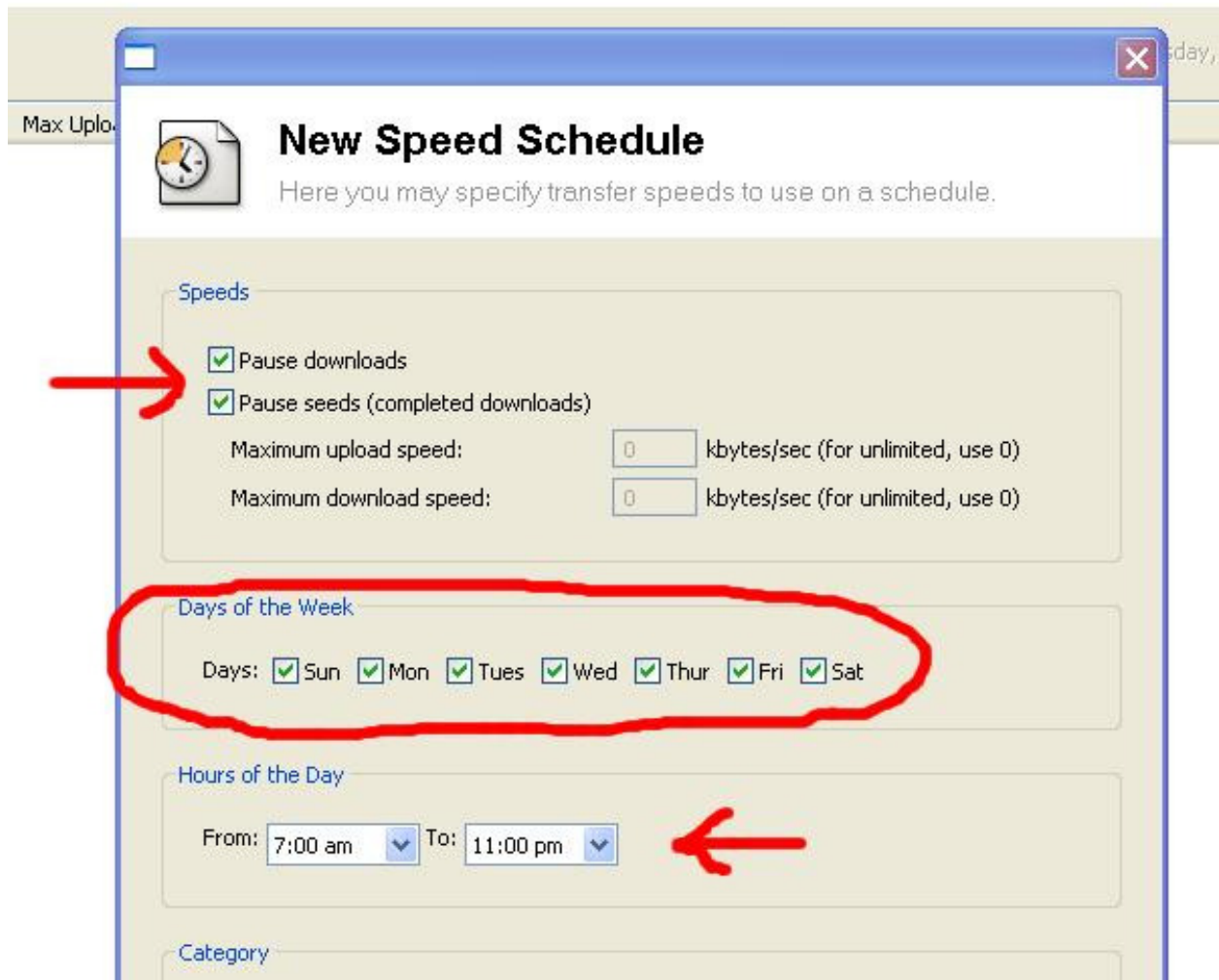


To use a scheduler on the Azureus client, you will need to download and install the 'Speed Scheduler' plugin that can be found at [http://azureus.sourceforge.net/plugin\\_details.php?plugin=SpeedScheduler](http://azureus.sourceforge.net/plugin_details.php?plugin=SpeedScheduler).

Once installed, you can access the scheduler via 'Plugins' and then 'Speed Scheduler'. Once open, select the 'New Schedule' button on the right side. In the new window, select both 'Pause downloads' and 'Pause seeds', set for all days of the week and set hours from 7am to 11pm, as shown below.

# Speed Scheduler

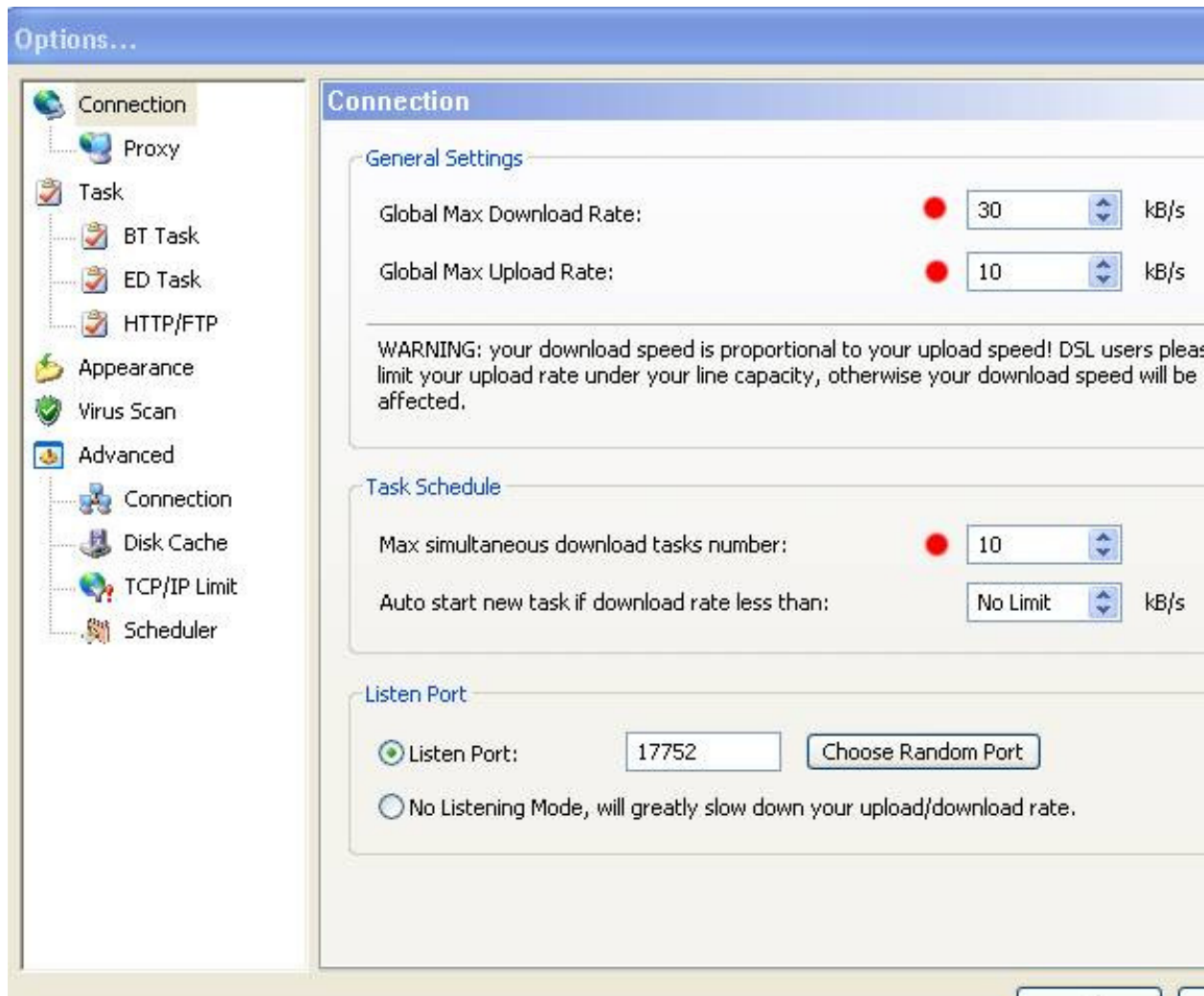
Manages transfer speeds on a schedule. (version 1.4)



## BitComet

If you're using the BitComet client, go to 'Options' and then 'Options'...

Under 'Connection', set 'global download' to 30kB/s, 'global upload' to 10kB/s, and 'Max connections globally' to 10 as shown below.



Then, select 'Scheduler' in left pane, tick off 'Enable Scheduler' and set 'Turn off' to everyday from 7am until 11pm.

